



# NCSWCD 2014 ANNUAL REPORT

*"WORKING TOGETHER FOR HEALTHY SOILS & CLEAN WATER"*

## INSIDE THIS ISSUE:

<i>New District Manager</i>	<b>2</b>
<i>Raingardens</i>	<b>2</b>
<i>Beach Clean-Up</i>	<b>3</b>
<i>Tree &amp; Shrub Sale</i>	<b>3</b>
<i>LI Envirothon</i>	<b>4</b>
<i>Reforest Nassau</i>	<b>5</b>
<i>Outreach Initiatives</i>	<b>5</b>
<i>Invasive Removal</i>	<b>6</b>
<i>Sustainable Holiday</i>	<b>6</b>
<i>Wetland Restoration</i>	<b>7</b>
<i>ESC Training</i>	<b>7</b>
<i>Film on Stormwater</i>	<b>8</b>
<i>GI Conference</i>	<b>8</b>
<i>Technical Assistance</i>	<b>9</b>
<i>Board Members</i>	<b>10</b>

## THE DISTRICT TODAY

### *A Message from Corey Humphrey, District Manager*

Nassau Soil and Water Conservation District proudly presents our 2014 Annual Report. Once again another busy and successful year has passed! As the new District Manager for Nassau County Soil and Water, I had the privilege of working with different organizations, schools, and separate individuals on various projects throughout Nassau County. Some of this year's highlights include the Rain-garden Construction and Workshop Series, the Annual Tree and Shrub Sale, and the NYCDEC Erosion and Sediment Control Training.

The success of these programs and others could not have been possible without the dedication and support from the staff, and the community. We believe that conservation through education can impact the minds and hearts of those who will be future environmental stewards for our natural resources.

This year, was a year of much progress



*Nassau County is full of beautiful parks and natural spaces. Theodore Roosevelt Memorial Park in Oyster Bay, NY. Photo Credit: K.C. Alvey.*

towards maintaining our precious soil and water resources. However, there is still more work to be done. We are confident that the upcoming year will

bring us closer to our mission, which is to protect, preserve, restore, and enhance natural resources through education and technical assistance, and provide programs and technical services to all Nassau County residents and municipalities to manage our precious natural resources.

And so, as you flip through the pages of this newsletter, we hope you find it interesting, and you learn a lot from the work that the District does. We look forward with working with you and helping us achieve what we came here to do. More success in the coming year!

## CONTACT US:

**Corey Humphrey**  
**District Manager**  
**Nassau County SWCD**  
 5 Old Jericho Turnpike  
 Jericho, NY 11753  
 (516) 364-5860  
[www.NassauSWCD.org](http://www.NassauSWCD.org)  
[nassauswcd@optonline.net](mailto:nassauswcd@optonline.net)

## FOLLOW US:



"Conservation District of Nassau County"



*SWCD Staff, K.C. Alvey and Corey Humphrey with Congressman Steve Israel and SWCD Board member, Eric Swenson.*

## NEW DISTRICT MANAGER



*Corey Humphrey began as the new District Manager in July 2014. Photo Credit: K.C. Alvey.*

2014 was an exciting year for the Nassau County Soil and Water Conservation District. Corey Humphrey started as the new District Manager, bringing his energy, as well as experience in ecological research, educational outreach, habitat restoration, and project management.

With a Masters in Environmental Science from Stony Brook University and 7 years of experience with Cornell Cooperative Extension of Suffolk County, Corey has a comprehensive understanding of the

complex environmental and economic issues facing Long Island. His previous work included the NYSDEC Horseshoe Crab Spawning Index Study and Citizen Science Network, GIS mapping as a stormwater specialist, fisheries research and the coordination of environmental educational programs.

Corey is committed to bringing stakeholders together to support healthy soils and clean water in Nassau County. His vision for the District includes making the agency more available to the public using social media as well

as traditional modes of communication. Since coming to the District in July of 2014, Corey has continued to make the District a resource through educational trainings and technical assistance for residents and municipalities. We're available to answer your questions on topics including, but not limited to: erosion, flood mitigation, rain-gardens, stormwater, and water quality. He can be reached at 516-364-5860 or

NassauSWCD@optonline.net

## RAINGARDEN CONSTRUCTION & WORKSHOP SERIES

Last year, the District expanded its raingarden campaign, by providing technical assistance in raingarden construction and co-hosting a popular workshop series in November 2014. What is a raingarden? A raingarden is a garden planted in a concave depression, designed to capture stormwater runoff and can help mitigate flooding during a precipitation event.

In the wake of Hurricane Sandy, Long Islanders are looking to raingardening as one of several steps to take to help improve coastal resiliency and mitigate stormwater pollution. Raingardens are beautiful, easy to install, require little maintenance and are a great way to improve water quality and property value. They also increase groundwater recharge rates, and provide habitat for butterflies and other-wildlife.

Over the last few years, the District has helped construct numerous raingardens throughout Nassau County. Jaime Van Dyke, Chair of the Board helped build the first

raingarden on Long Island at the Town of Oyster Bay Animal Shelter in Syosset in 2010. Van Dyke has also worked with the District, Eagle Scouts, and volunteers to construct raingardens at Tackapausha Preserve, the Town Farm in Oyster Bay Cove, and the Jericho Preserve.

This past fall, the District co-sponsored a popular workshop series on raingardens with national expert, landscape ecologist, and co-author of "Blue Thumb Guide to Raingardens," Rusty Schmidt. Over 100 residents, landscape professionals, gardeners, and municipal officials, attended the series, held on November 12th, 19th, and 20th, at the Waterfront Center in Oyster Bay. The presentation topics included sizing, modeling, and maintenance of raingardens. Schmidt demonstrated how simple and enjoyable it is to turn any ordinary garden into a raingarden that can also help the local environment.

"These gardens are the best way to clean water," said Schmidt. "Instead of going into storm drains, water soaks into these concave bowls into the ground



*The District joined the Town of Oyster Bay staff and volunteers to construct a raingarden at the Waterfront Center in Oyster Bay, NY. Photo Credit: K.C. Alvey*

two feet under the soil. They can be used to filter water from a house, driveway and in this case off of roads and sidewalks in the park."

In addition to the trainings, the District worked with the Town of Oyster Bay and Rusty Schmidt to plant a demonstration raingarden outside of the Waterfront Center in Oyster Bay. This work was completed with the help of

volunteers and a grant from the Long Island Sound Futures Fund. Thank you to all of the co-sponsors and partners for this successful program: Town of Oyster Bay, National Fish and Wildlife Foundation, Oyster-Bay Cold Spring Harbor Protection Committee, Hempstead Harbor Protection Committee, Sustainable Long Island, Friends of the Bay, and Long Island Sound Study.



# TOWN OF OYSTER BAY HARBOR & BEACH CLEAN-UP

On Saturday, September 20th, the District participated in the 21st Annual Town of Oyster Bay Harbor & Beach CleanUp at Theodore Roosevelt Memorial Park, organized by the Town of Oyster Bay, the North Oyster Bay Baymen’s Association and Friends of the Bay. More than 250 volunteers participated in the cleanup event,

removing debris including plastic, paper, food, and even discarded boats.

Governor Andrew Cuomo, Congressman Steve Israel, Nassau County Executive Edward Mangano, and musician Billy Joel, spoke to the volunteers, thanking them for improving the health of the bays and beautifying the



Governor Andrew Cuomo addressed the volunteers, thanking them for their service to Nassau County. Photo Credit: K.C. Alvey.



Volunteers hard at work collecting and inventorying trash at the Theodore Roosevelt Memorial Park in Oyster Bay, NY. Photo Credit: K.C. Alvey.

community.

Nassau County Executive Ed Mangano said, "From protecting our bays and beaches, to marine life and waterways, these environmental cleanup efforts along our shorelines are critical for our way of life in Nassau County. I thank Governor Cuomo, our residents and local organizations that annually commit themselves to leaving our

community better than they found it."

The District also provided information to volunteers about the hydrology of Long Island and additional ways to protect Nassau County’s precious natural resources. For future cleanups please visit [Nassauswcd.org](http://Nassauswcd.org).

# 2<sup>ND</sup> ANNUAL TREE & SHRUB SALE A SUCCESS

In spring 2014, the District hosted another successful Tree & Shrub Sale, furthering our mission of promoting environmental conservation. "Nassau County’s landscape still suffers from tree and plant loss caused by Hurricane Sandy and winter storms. The sale is a cost effective solution to help beautify areas throughout the County that had trees and shrubs destroyed," said Nassau County Executive Edward Mangano. "Nassau County SWCD’s replanting program will help restore the landscape in many neighborhoods, parks, and preserves." After Hurricane Sandy, the Nassau County SWCD started

the Annual Tree & Shrub sale as a way to help Nassau County residents replace those trees that were destroyed by the Superstorm. The District offered native plants, including oaks, maples and conifers to homeowners seeking to replace trees and shrubs on their property. This program also assisted community groups revitalize parks and preserves.

We are currently taking orders for our 3rd Annual Tree and Shrub Sale. Those interested in purchasing trees and plants through this program for spring 2015 should download the order form from the District’s website ([Nassauswcd.org](http://Nassauswcd.org)) or call

(516) -364-586 for more information. Orders must be received by Friday March 13, 2015. Pick up days for orders are Friday April 17 and Saturday April 18th from 9am –6pm at 5 Old Jericho Tpke, Jericho NY 11753. Make checks or money orders payable to "Nassau County SWCD" and mail to the Nassau County Soil & Water District at 5 Old Jericho Turnpike, Jericho, NY

11753, along with the attached order form. Trees and Shrubs are sold in bundles of 10 each and are approx. 24 inches in height.



We offer American elderberry (*Sambucus canadensis*) at the Annual Tree & Shrub Sale.

## WHOLE FOODS DONATES TO LI REGIONAL ENVIROTHON

In the Summer of 2014, the Nassau SWCD accepted a \$5,635 donation for the Long Island Regional Envirothon as part of the 5% Day at Whole Foods Market in Jericho, NY. 5% Day is a community giving day in which 5% of the day's net sales are donated to a local nonprofit or educational organization. The District staffed an educational outreach table at Whole Foods and interacted with the public about various SWCD programs, including the Long Island Regional Envirothon, an environmental studies competition for high school students co-hosted by the Suffolk County Soil & Water Conservation District, the

U.S. Dept. of Agriculture- Natural Resources Conservation Service, and the N.Y.S. Dept. of Environmental Conservation. This donation will help facilitate the 17th annual regional competition that provides high school students the opportunity to gain hands-on skills with activities led by professionals in aquatics, forestry, soils, wildlife, and a current issue. The theme of the 2014 Envirothon was Sustainable Local Agriculture and 2015's current issue is Urban Forestry. The Envirothon engages the next generation of environmental stewards in learning activities that promote the protection, preservation, and restoration of our natural resources, as a life-long com-



*Sachem North High School at SUNY Morrisville representing Suffolk County at the 2014 NYS Envirothon. From left to right: Danielle Paynter, Luke Bordonaro, Emily Watson, Grant Pham and Charlie Horn.*



*SWCD Board Members, Pat Aitken, Jaime Van Dyke, and Eric Swenson with SWCD District Manager, Corey Humphrey and Whole Foods staff.*

mitment. The Envirothon committee has carefully developed the program's learning objectives, which correlate with the N.Y.S. Dept. of Education's "Learning Standards" in the areas of Mathematics, Science and Technology, Social Studies, and English Language Arts. Wantagh High School was the winner from Nassau County and Sachem North High School won for Suffolk County in the 2014 competition. Both teams advanced onto the New York State competition.

Congratulations to Julia Laibach, Jaclyn Onufrey, Andrew Bloniarz, Emily Latif, and Sophia Liu from Wantagh High School and Charles

Horn, Emily Watson, Natalie De-Quarto, Danielle Paynter, and Grant Pham from Sachem North High School.

The 17th Annual Long Island Regional Envirothon will be held on April 28th, 2015 at Old Bethpage Village Restoration, 1303 Round Swamp Road, Old Bethpage, NY. All high schools in Nassau and Suffolk Counties are eligible to participate by registering one or two 5-member teams. All students from the two top scoring teams receive scholarships, prizes, and paid registration and transportation to compete in the New York State Envirothon in May 2015. To register, please visit [www.LIEnvirothon.org](http://www.LIEnvirothon.org).

## SEEKING VOLUNTEERS

*Interested in protecting your local resources? Looking for a chance to give back to your community?*

*The Nassau County Soil and Water Conservation District is currently seeking volunteers to help implement various environmental projects. No experience required. Weekend opportunities available. For more information and a listing of volunteer opportunities visit [Nassauswcd.org](http://Nassauswcd.org) or [facebook.com/nassauswcd](https://www.facebook.com/nassauswcd)*

**"WORKING TOGETHER FOR HEALTHY SOILS AND CLEAN WATER"**



## REFOREST NASSAU PROGRAM KICKS OFF



Downed trees in Garden City, NY after Hurricane Sandy. Photo Credit: CNN.

The District is excited to launch its “Reforest Nassau” campaign, filling a crucial need in the region by reforesting areas impacted by storm damage. Superstorm Sandy decimated over 10,000 trees in Nassau, greatly impacting the

ecology, air quality, coastal resiliency, wildlife habitat and aesthetics of the County.

The vision of the Reforest Nassau program is to work with residents,

municipalities, school districts, not-for-profit organizations, landscapers and others to raise native bare root trees at “grow-out stations” throughout Nassau County. After growing for several months at

grow-out stations, saplings will be transplanted in public spaces, replacing downed and damaged trees. In 2014, the District began a pilot scale version of the project, in conjunction with Hewlett Woodmere School District’s Youth Leadership team, a group that provides service-learning opportunities for high school students in their school garden. The Youth Leadership students are currently raising four varieties of native trees including Tulip, White Swamp Oak, Wild Black Cherry and Red Maple at their grow-out site and the District is providing technical assistance to will help transplant 50 donated trees to Nassau County’s Grant Park in the spring of 2015. A transplant plan

is currently being developed with technical guidance from Cornell Cooperative Extension of Nassau County, SUNY Farmingdale’s Horticulture Department, NYS Urban Forestry Council and Nassau County Department of Parks, Recreation and Museums. We look forward to expanding this program to add additional grow-out stations through partnering with other school groups, scouts troops, civic groups, and religious congregations. This “Reforest Nassau” program provides students and residents an opportunity to engage themselves in a service learning project and promote environmental stewardship within Nassau County.

## OUTREACH & EDUCATIONAL INITIATIVES

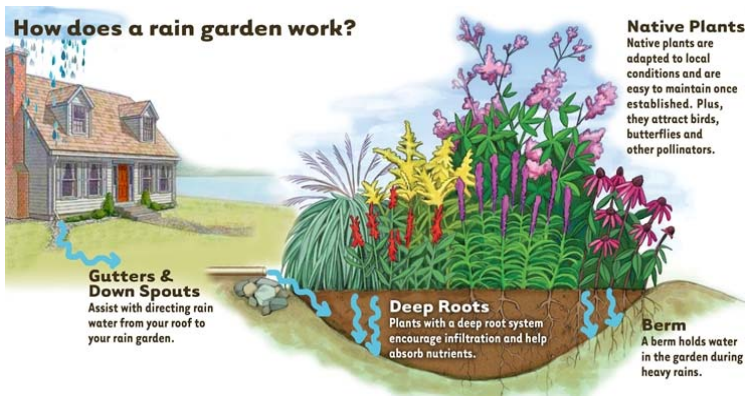
It was a busy year for the District, with a variety of educational and outreach programs. Over 2 weekends in Late September and early October, the District had a table at the 172nd annual Long Island Fair at Old Bethpage Village Restoration, a traditional country fair with harvest events and activities, brass band, concerts, pony rides, and puppet shows. Over 23,000 people attended

this popular event. We spoke with residents and shared information about the ground and surface water quality, raingardens, and the Long Island Regional Envirothon.

In addition, Corey Humphrey, District Manager, spoke at several community events about stormwater and green infrastructure, including the Long Island Sierra Club and SUNY Farmingdale Horticulture Club in October and November 2014.



The District had a table at the Long Island Fair at Old Bethpage Village in fall 2014. Left to right: K.C. Alvey and Syeda Jafari.



The District gives out information about stormwater, raingardens, and other forms of green infrastructure. Photo Credit: Tip of the Mitt Watershed Council.

The District also tabled at two Science Teachers Association of New York State book fairs to promote the Long Island Regional Envirothon with Suffolk SWCD. This event drew an attendance of over 200 educators in attendance at each book fair.

If you are interested in arranging a presentation with your community group in 2015, please contact us at [NassauSWCD@optonline.net](mailto:NassauSWCD@optonline.net) or 516-364-5860.

## INVASIVE AQUATICS REMOVAL AT CEDARMERE



Three quarters of the Cedarmere Pond surface is overgrown by invasives. Photo Credit: Brian Zimmerman.

Since fall 2013, the District has been spearheading the restoration of Cedarmere Pond, thanks to the efforts of Eric Swenson, SWCD Board member and Friends of Cedarmere Board member. Cedarmere

Pond is situated on the estate of William Cullen Bryant, an American romantic poet, journalist, and long-time editor of the *New York Evening Post*. The site overlooks Hempstead Harbor in Roslyn Harbor, NY. It is a magnificent landscape with natural and manicured features, including beautiful gardens and trees that still exist from Bryant's time.

In recent history, the Cedarmere Pond surface is over-

whelmed with 2 invasive species; water lilies and duckweed. If left untreated, the water lilies and duckweed will grow larger, preventing sunlight from penetrating the water column and creating a hypoxic (lacking dissolved oxygen in the water) condition. Sunlight penetration through the water is critical for native aquatic plants to flourish, because plants absorb sunlight to live (photosynthesis). These invasive aquatic plants can be removed or harvested by simply pulling them out by hand. The goal of this technique is to try and remove the entire plant, including the root system, by pulling, grubbing, or raking. Rooted plants are carefully dislodged from the bottom substrate so that the

entire plant can be collected and removed from the pond. Invasive plants and plant fragments removed from the pond are then carted off-site so that they do not wash back into the water and propagate themselves.

In June 2014, the District coordinated a "Pond Pull," with enthusiastic volunteers from Friends of Cedarmere and local residents to help remove the invasive plants. The Friends of Cedarmere and the Hagedorn Foundation have supported the project, along with Nassau County Department of Public Works, that provided staff and equipment to assist with the removal. Volunteers are needed for a follow-up removal effort on June 13, 2015. Please sign up through our Volunteer Interest Form online at <http://nassauswcd.org/contact-us/> or call us at 516-364-5860.

## SUSTAINABLE HOLIDAY CELEBRATION & TREE LIGHTING

The Nassau County SWCD hosted its 1st Annual Sustainable Holiday Celebration & Tree Lighting on Mon. Dec. 15th from 5-7PM at the historic Malcolm House in Jericho, NY. This event celebrated the end of a successful year and kicked off the Conservation District's "Reforest Nassau" community tree grow-out program. Nas-

sau Soil & Water staff, Board members, and partner organizations attended the event and enjoyed local apple cider, cookies, and holiday treats. Children also enjoyed making holiday crafts made from recycled materials.

The holiday season is a time of warmth and cheer for many people, and a time to celebrate with



Nassau County Soil & Water Conservation District Board Members & staff with Colorado blue spruce. Left to right: Eric Swenson, Jaime Van Dyke, Satish Sood, K.C. Alvey, and Corey Humphrey.



The historic Malcolm House at the Jericho Preserve in Jericho, NY. Photo Credit: K.C. Alvey.

colleagues, friends, and family. This can also be a time of excessive waste and consumption of natural resources. In order to promote environmental conservation, we gave out posters with simple tips to make the holidays more sustainable, including: 1) Buy a live tree with a balled root, 2) Conserve energy with LED lights and a timer, 3) Give sustainable gifts, 4) Buy locally produced food and drinks, and 5)

Use reusable dishes and utensils. Additional tips and a poster available for download at [www.NassauSWCD.org](http://www.NassauSWCD.org).

To conclude the event, the District held a ceremonious lighting of a potted tree. This Colorado blue spruce will be transplanted at the Malcolm House after the holidays (Spring 2015)



# WETLAND RESTORATION IN PORT WASHINGTON

Each year, the Nassau County SWCD coordinates a variety of ecological restoration projects across Nassau County. In 2014, we focused on a wetland restoration project at Mill Pond, adjacent to Manhasset Bay in Port Washington, NY. In partnership with the Town of North Hempstead, the District has set a goal to remove the invasive common reed (*Phragmites australis*), which has infested the pond and outcompeted the native smooth cordgrass (*Spartina alterniflora*) from flourishing.

The site is owned by the Town of North Hempstead and has been rehabilitated in the past, but the *Phragmites* has returned and impaired the ecosystem's ability to function. The *Phragmites* has decreased the water quality of this tidal

pond by creating large, dense, monoculture that outcompetes native plants and displaces wildlife, and critical marine organisms. Once established, *Phragmites* spreads vigorously by horizontal above-ground stolons and underground rhizomes. Because of the ability of *Phragmites* to resprout after cutting or other disturbance, the use of a systemic herbicide is necessary to ensure the removal of this invasive plant. The Town of North Hempstead is coordinating the herbicide application with a New York State certified commercial pesticide applicator.

The District will help contribute to the restoration of Mill Pond through purchasing and replanting native *Spartina alterniflora* and *Spartina patens* in April 2015. We are going to be planting nearly 4,000 *Spartina* plugs, and



Mill Pond in Port Washington, NY is infested with invasive *Phragmites*, damaging water quality. Photo Credit: K.C. Alvey.

seeking volunteers to support the effort. This is a great opportunity to gain hands-on experience with ecological restoration and to help protect Nassau County's precious wetlands. If you are interested in helping with this project, please sign up through our Volunteer In-

terest Form online at <http://nassauswcd.org/contact-us/> or call us at 516-364-5860.

# NYSDEC EROSION & SEDIMENT CONTROL TRAINING



The District hosted the NYSDEC 4-hour Erosion & Sediment Control Training for developers and contractors on Feb. 4th, 2015. Photo Credit: Clean Water MN.

The District has hosted a NYSDEC Endorsed 4-Hour Erosion and Sediment Control (E&SC) Training on February 4, 2015 as part of our commitment to improve the region's water quality in the ground and on the surface. 96 contractors, engineers, municipal staff and

activities are being performed. The training was held at Old Bethpage Village Restoration's exhibition hall, in Old Bethpage, NY. The cost of the training was \$100 that included, lunch, refreshments, training materials, certificate, and certificate ID card. Participants were trained by CPESC trainer Brian Scoralick from Dutchess County Soil and Water Conservation District.

For future NYSDEC 4 hour Erosion and Sediment Control Trainings, please visit [Nassauswcd.org](http://Nassauswcd.org) or [facebook.com/NassauSWCD](https://facebook.com/NassauSWCD). Future training sessions are sched-

equipment operators participated in this training and were rewarded with an official NYSDEC proof of training card that is valid for 3 years. This training is a requirement under the NYSDEC Stormwater permit GP-0-10-001; all developers, contractors, and subcontractors must identify at least one trained individual from their company that will be responsible for implementation of the Stormwater Pollution Prevention Plan, and have at least one trained individual on site on a daily basis when soil disturbance

uled for the fall and winter of 2015. Please contact Nassau SWCD for more information.

We would like to thank the sponsor for this February 4th training at OldBethage Restoration Village. ACF Environmental  
1-800-448-3636  
[info@acfenv.com](mailto:info@acfenv.com)  
[www.acfenvironmental.com](http://www.acfenvironmental.com)



## FILM ABOUT STORMWATER & GREEN INFRASTRUCTURE



*Urban agriculture is a form of green infrastructure. Photo Credit: Brooklyn Grange*

Nassau County is among the most developed regions in New York State. As in other similar areas, a great deal of the surface is paved, creating a large amount of un-

treated stormwater runoff. Stormwater discharges in these areas are of major concern due to high concentration of pollutants found in these discharges.

Concentrated development in urbanized suburban areas substantially increases the amount of impervious surfaces, such as paved streets, driveways, parking lots and sidewalks. Pollutants from concentrated human activities settle and remain on these surfaces until a storm event washes them into nearby storm drains.

The District received a grant from the N.Y.S. Dept. of Environmental Conservation to develop a film to educate the general public, about stormwater and green infrastructure. With this project, we will educate the public, students, officials, and developers, on the impacts associated with stormwater runoff and green infrastructure practices, that can be utilized to help limit these impacts. The film will also inform viewers about best management practices, and smart-growth technologies that can be implemented throughout the region. This fall, we began working on the reproduction for the film and plan to

continue shooting the scenes throughout the winter and spring of 2015.

The film features experts in stormwater, green infrastructure, and sustainability. As well, feature several GI examples from around the region including bioswales, retention ponds, rain-gardens, permeable pavements and catch basin filters. This program has been a major undertaking for the District, who reached out to Hofstra University and SUNY Old Westbury for 3 interns, who are helping support the project, in addition to the production company, Faithful Dog Digital LLC based in NY.

We look forward to distributing this educational film to community groups, schools, and municipalities in Nassau County in 2015.

## LONG ISLAND GREEN INFRASTRUCTURE CONFERENCE

On June 11, 2014, the District co-hosted the 3rd Annual Long Island Green Infrastructure Conference & Expo at the Town of North Hempstead's "Yes We Can" Community Center in Westbury, NY. The conference focused on innovative green infrastructure technologies and strategies for coastal and inland resiliency planning, in the wake of Hurricanes Irene and Sandy.

Green infrastructure (GI) uses vegetation, soils, and natural processes to manage water, increase stormwater infiltration, and create healthier urban environments. According to the EPA, green infrastructure can range in scale from site design approaches such as raingardens and green roofs to regional planning approaches such as conservation of large tracts of open land. Green infrastructure practices have many co-benefits and can help

reduce carbon emissions, protect water quality, improve quality of life, and provide wildlife habitat.

The conference was attended by municipal officials, planners, consultants, property owners, developers, and residents. They were provided with the information needed to implement cost effective, sustainable green infrastructure practices and to protect Long Island's valuable natural resources.

The conference included a tour of the LEED (Leadership in Energy and Environmental Design) Platinum "Yes We Can" Community Center, workshops and a keynote address by Jon Kaiman, Special Advisor on Superstorm Sandy relief to Governor Andrew Cuomo. Lectures and workshop sessions included applications of GI for Coastal Protection, Effects of Climate Change and Adaptation Planning, Municipal codes and Breaking Barriers, and Economic Value of GI. The confer-



*The Nassau SWCD played a key role in organizing the Long Island Green Infrastructure Conference, held on June 11, 2014.*

ence also gave participants a look into the current technologies and material including stormwater calculators and methods of retrofitting existing infrastructure to meet GI goals.

Thank you to everyone who helped make this a successful event: Suffolk County Soil & Water Conservation District, Cornell Cooperative Extension of Suffolk County, Hempstead Harbor Pro-

tection Committee, Manhasset Bay Protection Committee, Oyster Bay/Cold Spring Harbor Protection Committee, and New York Sea Grant.

For technical assistance with green infrastructure development please contact us at the District. 516-364-5860.

Nassauswcd.org.



## TECHNICAL ASSISTANCE & SERVICES AVAILABLE

### **NATURAL RESOURCES MANAGEMENT:**

- Agricultural Environmental Management (AEM)
- Stream corridor restoration
- Wetland construction and restoration
- Shoreline protection

### **PROJECT IMPLEMENTATION:**

- Grant/contract administration
- Interagency cooperative agreements
- Project survey & design
- BMP implementation on public and private lands

### **PROTECTING PUBLIC HEALTH & SAFETY**

- Water supply protection
- Water quality monitoring

### **LAND USE PLANNING**

- Soil interpretations
- Site plan reviews
- Agricultural Value Assessment
- Stormwater management
- Recreation & open space planning
- Farmland protection
- Wetlands protection
- Watershed protection plans

### **PUBLIC INVOLVEMENT**

- Public participation/stakeholder advisory groups
- Identifying key audiences
- Consensus building
- Coalition building
- Networking
- Environmental education

# NASSAU COUNTY SOIL & WATER CONSERVATION DISTRICT



## CONTACT US :

**Corey Humphrey**  
District Manager  
nassauswcd@optonline.net

**Coreyn Goddard**  
Conservation Technician  
nassauswcd2@optonline.net

**Dolores Gelish**  
Administrative Assistant

Nassau County SWCD  
Malcolm House  
5 Old Jericho Turnpike  
Jericho, NY 11753  
(516) 364-5860  
www.NassauSWCD.org

## FOLLOW US:



"Conservation District  
of Nassau County"

## OUR MISSION

*"WORKING TOGETHER FOR HEALTHY SOILS & CLEAN WATER"*

*Our purpose is to protect, preserve, restore, and enhance natural resources through education and technical assistance. We provide programs and technical services to all Nassau County residents and municipalities to manage our precious natural resources.*

## BOARD MEMBERS

**Jaime Van Dyke, Chair**  
Town of Oyster Bay  
jvandyke@oysterbay-ny.gov



**Satish Sood, Vice Chair**  
Nassau County Department of Public Works  
ssood@nassaucountyny.gov



**Kevin Braun, Treasurer**  
Town of North Hempstead  
braunk@northhempsteadny.gov



**Eric Swenson, Secretary**  
At-large  
E.Swenson@hempsteadharbor.org



**Patricia Aitken**  
At-large  
aitkenpatricia@gmail.com

